



3 CRITERION MEWS | | UPPER HOLLOWAY | N19 3EN

£3,700 PER MONTH

LIVINGSPLACE
ESTATE AGENTS

3 CRITERION MEWS |
 UPPER HOLLOWAY | N19 3EN
 £3,700 PER MONTH

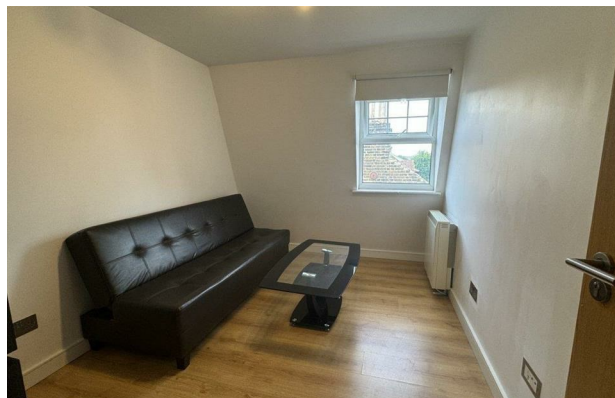
SPACIOUS 3/4 BEDROOM SECOND FLOOR FLAT - ARCHWAY - AVAILABLE 8TH AUGUST 2026

WE ARE PLEASED TO PRESENT THIS SPACIOUS AND WELL-MAINTAINED 3/4 BEDROOM SECOND-FLOOR FLAT, IDEALLY SITUATED IN A QUIET YET HIGHLY CONVENIENT LOCATION IN ARCHWAY. JUST A 10-MINUTE WALK FROM ARCHWAY UNDERGROUND STATION AND ONLY MOMENTS FROM UPPER HOLLOWAY BR, THE PROPERTY BENEFITS FROM EXCELLENT TRANSPORT LINKS AND A WEALTH OF NEARBY AMENITIES.

KEY FEATURES INCLUDE:

FLEXIBLE LAYOUT: 3 DOUBLE BEDROOMS WITH A SEPARATE RECEPTION (OR OPTIONAL 4TH BEDROOM)

- FLAT - FURNISHED OR UNFURNISHED
- 1 BATHROOM
- NO SPECIAL ACCESSIBILITY
- GAS CENTRAL HEATING
- 4 BEDS
- ENERGY RATING : B
- NO PARKING



Energy Efficiency Rating		Current	Potential
<i>Very energy efficient - lower running costs</i>			
(92 plus) A			
(81-91) B			
(69-80) C			
(55-68) D			
(39-54) E			
(21-38) F			
(1-20) G			
<i>Not energy efficient - higher running costs</i>			
England & Wales	EU Directive 2002/91/EC		

COUNCIL TAX BAND C
 EPC RATING

105 ST PAULS ROAD
 ISLINGTON
 LONDON
 N1 2NA
 020 7354 0505
 INFO@LSEA.CO.UK